



MATRIX HEALTH LINE

www.cemworldusa.com www.matrixhealthline.com
cemtechusa@gmail.com matrixofhealth@gmail.com

TL.917-776-5410



NEW and ONLY NLS+EHF Matrix Decoder



The NEW NLS+EHF Matrix Decoder Bio-resonance device has the ability to interact between a living organism and its frequency patterns that surround or resonate as the result of the organism's movements. NLS+EHF Matrix Decoder device is classified as a Quantum Physics device or Energetic Device. By using a computer-driven tool in a safe, noninvasive, painless, and effective way, information is displayed about subtle changes to the stress in the body and thus, provides a means to regulate these concerns.



The ultimate goal is to help to increase relaxation, relieve pain, and help healthier lifestyles, and more comfortable life patterns while enhancing both function and performance using the physiological signals of the body.

The NLS+EHF Matrix Decoder- Non-linear system (NLS) and EHF ((Millimeters wave therapy) refers to an entirely new class of devices, which are called “body scan” or “energetic scan”

The NLS+EHF Matrix Decoder uses a treatment method designed to strengthen the body and enhance the body's natural recovery to well-being. NLS+EHF Matrix Decoder device scans each organ or tissue on a cellular level. The method is based on an

analysis of the stem's electromagnetic waves which contain the complete information of the entire organism.

The results can be obtained in the form of visual images with the topography of the affected area, as well as graphical features, which allow us to see distress to body tissue.

The NLS+EHF Matrix Decoder is user-friendly device that provides excellent accuracy. With its ease of simplicity, it is designed to be used by anyone who takes a proactive approach and strives for good health and well-being.

In a way, the NLS+EHF Matrix Decoder system takes bearings of this energy just where it originates in order to then decode and display it on the computer screen where a virtual model of the organ is produced in specific colors.

The NLS+EHF Matrix Decoder with (millimeter wave therapy) is a new revolutionary method in health care. The device is a handheld therapy instrument, introduced in Europe, the US, and Asia from Russia where it has undergone 30 years of rigorous research, testing, and documentation.

This short-wave therapy device reproduces the signals of healthy cells and reverts sick cells to proper function through external radiation. The frequencies provide a strong physiologic effect without heating the tissue or making structural changes with minimal energy necessary.

It has been shown to be effective in the areas of immune system normalization, increased microcirculation, balanced metabolism, reduces aging, reduced healing time for persons that passed stroke and brain hemorrhages, decreased the healing time for wounds, and bone fractures 2-3 times. It is used in cosmetics to remove warts, skin spots, skin fungus, etc. also bacteria and parasites can be removed. Is very effective in pain management, like pain in a joint, muscle pain, migraine, etc.

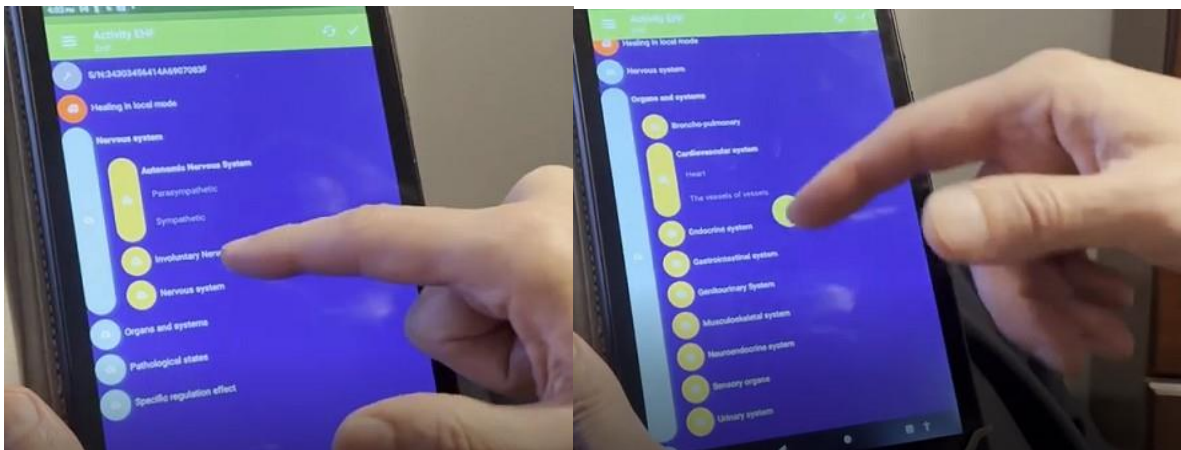
Serials EHF are unique devices and use modern technology that embodies the idea of oriental medicine combined with modern quantum mechanical models particularly Chrono toxicology and the contemporary German school of homeopathy. It can also be used for electronic inoculations against e.g. tuberculosis, type C hepatitis, etc. The device can be used by everybody and has no known side effects.

For additional information contact you can contact us at

www.cemworldusa.com www.matrixhealthline.com 917-776-5410 cemtechusa@gmail.com matrixofhealth@gmail.com

EHF Therapy HOW DOES IT WORK?

1. The most unique function can be described as “electronic homeopathy”. A crystal, connected to the instrument, pick-up and record the electronic information from the cells in the problem areas, of the client. By playing back this information, a healing process is started. This feature is unique
2. Another function is to send out millimeter waves, the device emits frequencies in the region of 39GHz to 78GHz which corresponds to the intercellular communication frequency bands. By applying the crystal against the body and especially acupuncture points, the communication tracks towards the brain is opened. This makes it possible for the brain to balance problems like pain, healing, etc. This function can also be used to make the water structured, which makes a better quality of the water.
3. In addition, the carrier frequency (39GHz – 78GHz) can be modulated with selectable organ frequencies. This improves the effectiveness considerably. There are 16 free use such modulated frequencies, pre-programmed for different areas and 100 + under a supervisor, for example, Anti-stress, Respiratory, Digestive problems, etc.



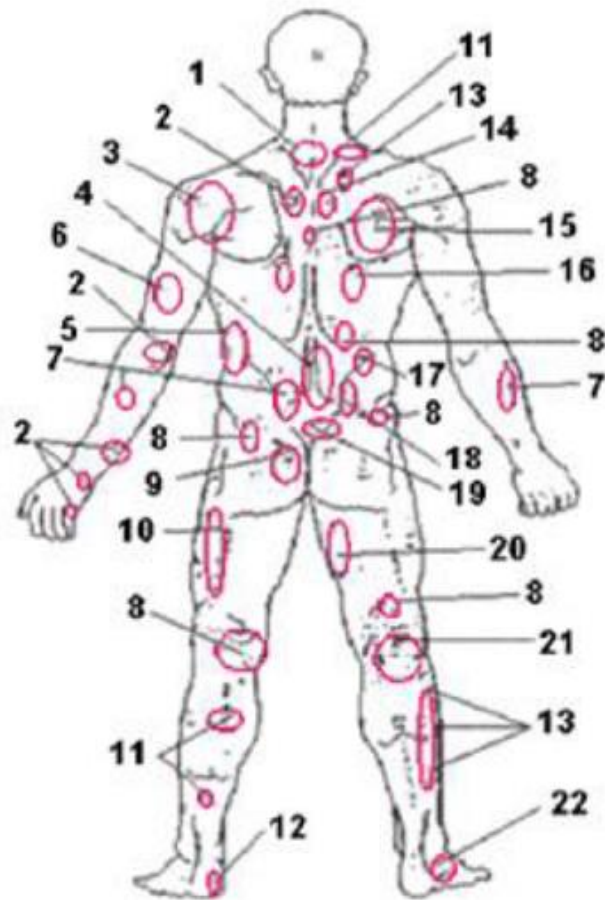
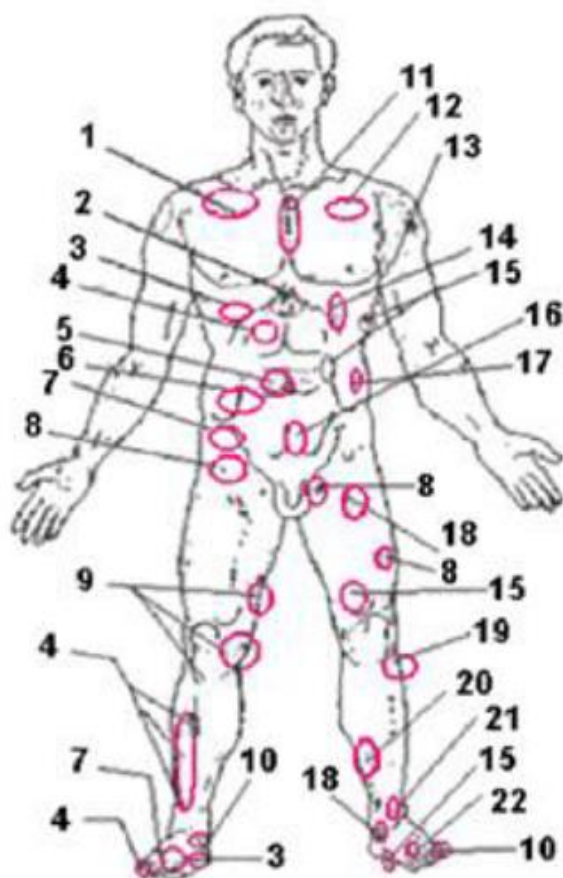
ADVANTAGES:

It is easy to handle, can be used by everybody also at home. Quick, effective pain management. Good complement with other methods.

Many studies already performed. Low price.

HOW TO APPLY EHF THERAPY?

- a. Bioactive zones (BAZs) or reflex zones
- b. Bioactive points (BAPs) or acupuncture points
- c. Energy centers or chakras
- d. Local areas or sites of where the health problem/s is/are located



Front view

1. Pulmonary abnormalities
2. Gastritis
3. Liver disorders
4. Gallbladder diseases
5. Fine bowels disorders
6. Large bowels disorders
7. Renal abnormalities
8. Changes in hip joint
9. Changes in knee joint
10. Urinary bladder diseases
11. Stenocardic syndrome
12. Heart failure
13. Heart ischemia
14. Spleen diseases
15. Pancreas abnormalities
16. Prostate gland and urinary bladder diseases
17. Sigmoid colon abnormalities
18. Sexual disorders
19. Maldigestion
20. Diseases in sexual sphere
21. Visual acuity loss
22. Stomach diseases

Rear view

1. Cervical part of spinal cord osteochondrosis
2. Heart abnormalities
3. Spleen diseases
4. Gastric ulcer
5. Pancreas abnormalities
6. Stomach diseases
7. Large bowels disorders
8. Renal abnormalities
9. Sexual disorders
10. Changes in hip joint
11. Ureter abnormalities
12. Urinary bladder diseases
13. Gallbladder diseases
14. Bile duct diseases
15. Pulmonary abnormalities
16. Liver disorders
17. Adrenal gland diseases
18. Fine bowels disorders
19. Diseases of organs of small pelvis
20. Changes in knee joint
21. Knee joint ligament impairment
22. Rectum abnormalities

EHF-2 DEVICE

“EHF-2” is a miniature portable millimeter wave therapy device with 2 independent oscillators on board with 7 modes of self- operation and customize modes via mobile APP

7 MODES OF SELF - OPERATION

Mode 1: Universal EHF, 5 minutes. Easy to work with the biologically active points (acupuncture points), Structure water.

Mode 2: Background Resonance Radiation (BRR), 1 minute. It is used to record information on the oscillator/emitter.

Mode 3: Swing EHF, 20 minutes. From 0.1 Hz up to 500Hz It is used in all cases, for treatment and preventive. Can be just place around any part of the body that request help

4,5,6,7,8,9,10,11 mode pre setup by factory and can be customize using mobile APP (+ 170 programs with full package)

12 BASE PROGRAMS OF MOBILE APPLICATION EHFROUND:

- • 1 —Immune system;
- • 2 — Detoxification;
- • 3 — Healthy eyes;
- • 4 — Energy Regulation;
- • 5 — Nice Sleep;
- • 6 —Female Health;
- • 7 —Male Health;
- • 8 —Diet regulation;
- • 9 —Free of pain;
- • 10 —Healty cardiovascular system;
- • 11 — Antistress;
- • 13 — Nice Breathe;

This device designed to be used by common persons and should be supervised by physicians.

The presented list does not limit indications for use the apparatus, but each particular case should be preceded by consultation by an attending physician to determine the final diagnosis and exclude individual contraindications. With difficult diagnoses, the initial course of treatment demands obligatory control and/or specialist participation.

There are additional 170 + programs accessed via cloud technology only with a full package

RECOMMENDATIONS FOR THERAPEUTIC PROCEDURES

EHF-therapy has a mild sedative effect, which in the case of individual sensitivity to EHF radiation can lead to sleepiness and attention decline. In this case, you should limit the performance of work requiring concentration, including the control of the vehicle immediately after the procedure, or to carry out the procedure before going to bed. It is not allowed during a therapeutic procedure to use a mobile phone or other wireless communication devices. It is not allowed the simultaneous use of different types of emitters. In chronic apparatus processes applied to the painful area long – up to 24 hours. In acute diseases, and extensive pathological foci rewriting is recommended several times a day. The impact made on each individual pathological focus. Therapy is conducted before the disappearance of the pathological process. In the treatment of the pathological process in the home, affecting the projection of bodies follow the doctor's advice. Treatment of diseases of carrying a serious danger to the patient's health, carried out exclusively under the supervision of a physician. In this case, the treatment apparatus "spinor®» is an additional tool in the conduct of complex treatment. Treatment of diseases regulated clinical material. Before using the device, you must consult your doctor.

INDICATIONS

EHF-therapy method is effective for the treatment of many diseases, especially in the complex therapy: peripheral nervous system diseases; diseases of the autonomic nervous system; substance abuse; diseases of upper respiratory tract; diseases of the cardiovascular system; disease of the lungs and pleura; diseases of the gastrointestinal tract; diseases of the skin and subcutaneous tissue; diseases of the musculoskeletal system; gynecological diseases; urological diseases; pain of any localization; articular pathology; diseases of the spine; wounds, burns; allergic diseases accompanied by skin manifestations; childhood diseases: idiopathic scoliosis in children and adolescents, atopic dermatitis in children. EHF-therapy and EHF-therapy with background resonance radiation combines well with other types of treatment (surgery, medication, physical therapy, homeopathic). In some case the use of EHF-therapy as a self-help: for the prevention and treatment of early stages of SARS, treatment of pain syndromes, etc...

For additional information contact you can contact us at

www.cemworldusa.com www.matrixhealthline.com 917-776-5410 cemtechusa@gmail.com matrixofhealth@gmail.com